

GarmentWorks

Mask Pattern
Size Regular
Cut 2 Self + 2 Contrast + 2 Liners

This square
should print 1"

Intentionally blank

Sewing Instructions: Mask

Fabrics

- 1/4 Yard Self fabric (plain weave printed cotton)
- Optional 1/4 Yard Contrast fabric (plain weave printed cotton)
- Optional 1/4 Yard Liner fabric (non-woven sew-in interfacing)

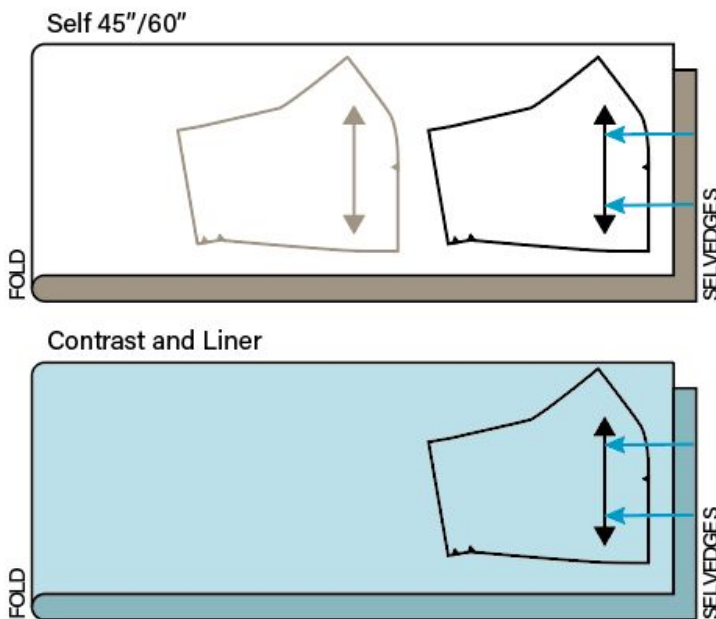
Tie

- 1 1/2 yards ribbon 1/4" - 1/2" wide (twill tape, hem tape, strapping, cording, rope)
OR
- 3/4 yards elastic 1/4" - 1/2" wide (this can be used for a fixed or adjustable elastic strap)

Optional Notions

- Cord Stop
- Safety pin

Cutting Layout



Sewing Instructions

These instructions show the mask with a self, contrast and liner fabric.

- You can use the same fabric for self and contrast if desired.
- You can omit the liner, if desired.
- Make sure you have a right and a left for each self, contrast, and liner fabrics.

Place contrast fabric right sides together.

Place self fabric right sides together and surround the self by the liners on top and bottom.

Sew each bundle together on the curved notched side at 1/4" seam allowance.

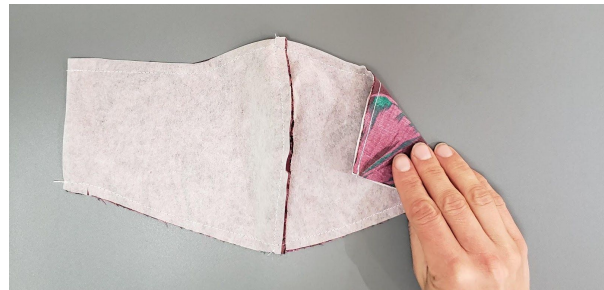
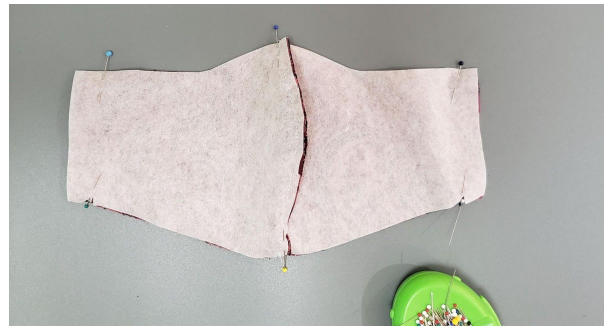


Press seams open and flat.



Place self to contrast fabric right sides together.

Pin then sew top and bottom edges at 1/4" seam allowance.



Starting from one side, turn the mask right side out and then press flat.



Topstitch the entire bottom edge.

Topstitch the upper edge in the area indicated "nose wire" on the pattern. The distance of the topstitching from the top edge of the mask should measure 1/8" + the width of the material you are using for the nose wire.

The nose wire materials pictured here are an upcycled twist tie and brass craft wire that has had the sharp ends curled under.



Cut the nose wire to the appropriate length and insert it inside the mask in the channel created by the topstitching.

It may be difficult to get past the center seam allowances. Wiggle it until it gets past the seam allowances or try inserting it from the other side.



Backstitch on each side of the nose wire to hold it in place. Be careful not to stitch on top of the nose wire.



Fold and press the short sides inward.

The first fold is 1/4".

The second fold is 1/8" bigger than your tie or elastic strap.



Edgestitch close to the interior fold with or without the strap in position. This creates a casing for the tie. (With a safety pin you can insert the tie after edgestitching.)

We like the bow or cord stop on top. Do what is most comfortable for you.



Tie it and you are all set to keep your fellow citizens safer.

Add a cord stop if desired.



Fixed Elastic Strap Variation

Try on the mask with elastic in the casing to find a comfortable length. Make sure it slips on and off your head easily.



Lap the elastic and zig zag across the overlap.



Slide this untidy join so it is hidden inside one of the casings.



Backstitch through all layers so it does not slip out to reveal its untidy self.



Elastic Ear Loop Variation

Cut the elastic in half and thread each piece through the side casings.

Adjust the length as desired and repeat the steps above for the fixed elastic on both sides of the mask.

